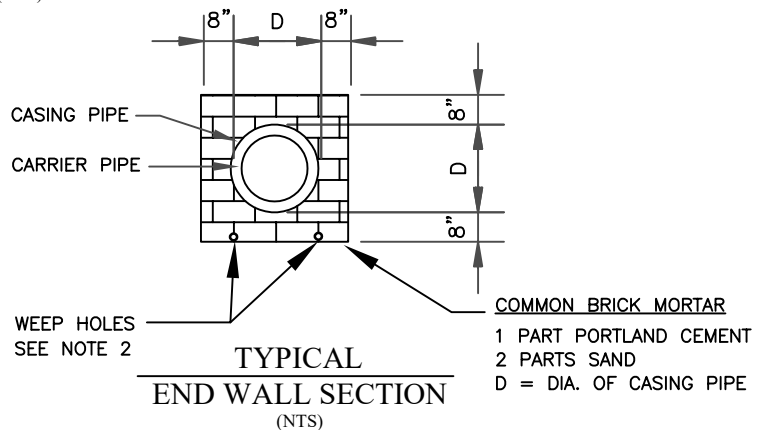


GENERAL NOTES:

1. SEE DRAWINGS FOR LOCATION, SIZE AND LENGTH OF STEEL PIPE CASINGS.
2. INSTALL TWO (2) 1-INCH DRAINS EACH SIDE OF CARRIER PIPE IN DOWNHILL END WALL.
3. ENCASEMENT PIPE IS TO EXTEND OUTSIDE OF THEORETICAL 1:1 SLOPE FROM EXISTING OR PROPOSED EDGE OF PAVEMENT AND 5 FEET BEHIND THE CURB AND/OR 5 FT BEYOND THE TOE OF THE SLOPE; REGARDLESS OF PROPOSED INSTALLATION BY OPEN-CUT OR TRENCHLESS EXCAVATION.
4. ALL EXCAVATIONS SHALL BE OUTSIDE THE PROJECTED 1:1 THEORETICAL SLOPE FROM EDGE OF PAVEMENT (E.O.P) LINE OR A MINIMUM OF 5 FEET FROM THE EDGE OF PAVEMENT TO THE NEAREST EDGE OF TRENCH, UNLESS APPROVED BY THE APPROPRIATE AGENCY.
5. ALL TRAFFIC WILL BE EXCLUDED FROM THE 1:1 SLOPE AREA UNTIL BACKFILL IS COMPLETE.
6. IN ANY EVENT SHOULD THE 1:1 SLOPE AREA BE UNPROTECTED, ACTIVE SHORING (SHEET PILING, SOLDIER PILES AND/OR LAGGING, ETC) SHALL MEET THE APPROVAL OF NCDOT DIVISION ENGINEER AND/OR CITY TRANSPORTATION ENGINEER, AS APPLICABLE.
7. ACTIVE SHORING SHALL BE IN ACCORDANCE WITH OSHA TRENCHING STANDARD 1926 SUBPART "P" OR AS AMENDED.
8. RESTRAINED PUSH-ON JOINT DUCTILE IRON CARRIER PIPE SHALL EXTEND THROUGH ROAD RIGHT-OF-WAY AND CASING PIPE ASSEMBLY AT MINIMUM, OR AS INDICATED ON THE APPROVED PLANS. THE MORE RESTRICTIVE CONDITION SHALL APPLY.
9. SEE CITY DETAIL "CASING SPIDER" FOR CASING PIPE AND SPIDER REQUIREMENTS.
10. CATHODIC PROTECTION REQUIREMENT - WHERE CATHODIC PROTECTION IS REQUIRED FOR GAS LINE CROSSINGS, THE CASING PIPE SPIDERS SHALL BE ADVANCE PRODUCTS AND SYSTEMS, INC., STAINLESS STEEL BAND CASING SPIDERS, MODEL SSI, OR EQUAL; AND THE STEEL CASING PIPE IS TO BE UNCOATED STEEL.



			CITY OF CONCORD STANDARD DETAIL		
			INSTALLATION OF CARRIER PIPE WITHIN RIGHT-OF-WAYS		
4	6/2018	SVM	REVISED TO REMOVE RAILROAD REFERENCE		
3	12/2017	SVM	REVISED TO REFERENCE CITY SPIDER DETAIL AND CATHODIC PROTECTION NOTES		
2	2/2013	SVM	REVISED TO INCLUDE RAILROAD INSTALLATION CONDITIONS		
1	9/2012	SVM	REVISED TO INDICATE STANDARD INSTALLATION CONDITIONS WITHIN IN ROADWAYS		
No.	Date	By	REVISION		
Drawn By:	Checked By:	Approved By:	Date	Sht	of
SVM	MSH		02/10		